

MasterSaw 625

DOUBLETABLE

universal automatic multi-centre machining centre



 **INTERMAC**

When competitiveness
means managing the
entire machining
process with a
single solution



Made **In** Intermac

The market demands

a flexible working tool which allows for the automation of the production cycle, even in environments subject to major space limitations.

Intermac responds

with a machine that combines the technology of the 5-axis bridge saw with that of a 5-axis machining centre, in a single solution. With no need for operator intervention, this machine manages the entire cycle in fully automatically mode, from cutting to finishing of the piece or pieces to be machined.

- ✓ **Two working tables: one dedicated to disc cutting, and one devoted to finishing.**
- ✓ **The operator is relieved of the majority of the panel handling operations, from cutting the sheet to unloading the finished pieces.**

The all-in-one, compact
marble-processing
solution for small
businesses and
companies with
high production
volumes



MasterSaw 625

DOUBLETABLE

universal automatic multi-centre machining centre



Primed and ready to deliver top-level performance

The MasterSaw 625 DoubleTable encompasses the very best of Intermac's bridge saw and traditional machining centre technology.



With a camera that allows the operator to optimise the natural grain of the sheet and manage waste.



↙ The variable Z thickness tracer (optional) maintains constant machining quality, even on pieces of irregular thickness. Also suitable inclined disc-cutting processes.

MasterSaw 625

DOUBLETABLE



The tool magazine is extremely large, meaning that the necessary tool can be quickly loaded in the machine at any time.



Magazine dedicated to tool change operations for aggregates, with magnetic change.



The machine can be equipped with two magazines for discs with diameters ranging from 400 to 625 mm.

Re-engineering the working cycle



Loading the sheet onto the wooden work table.

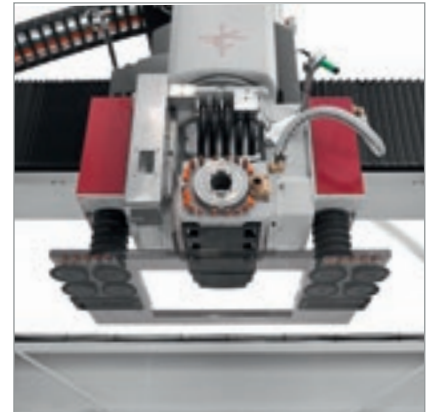
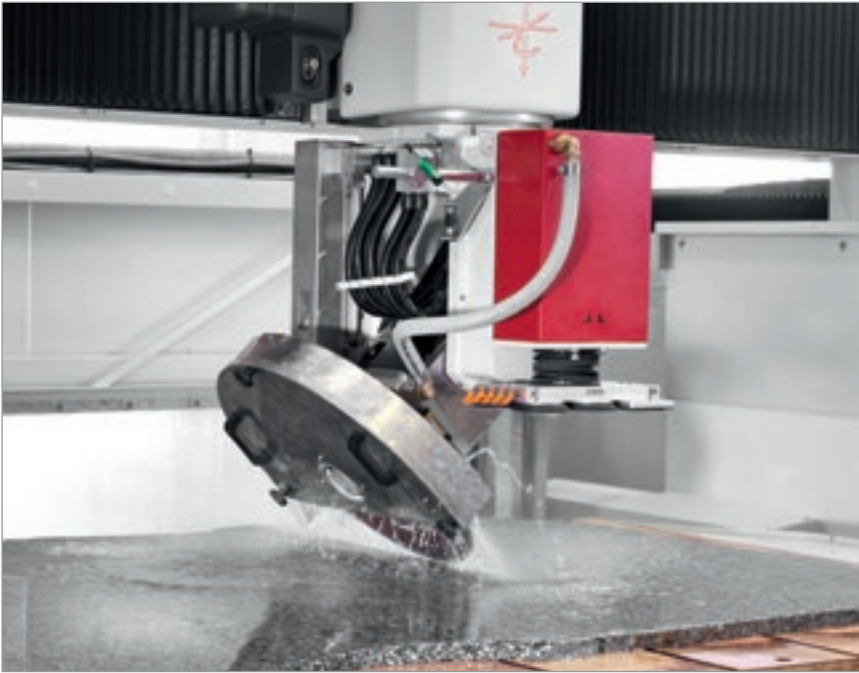


The wooden work table tilts into a horizontal position



The wooden work table enters into the working area above the aluminium table, where the suction cups are already in place.

Execution of the sheet cutting process.



The semi-finished pieces are collected by the suction cup system on the head, and positioned on the aluminium table suction cups.

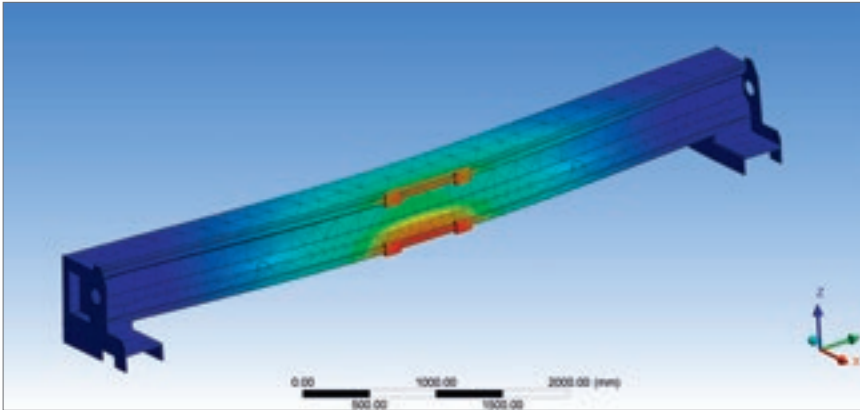


The pieces to be finished are placed on the aluminium table suction cups, ready to be processed.



Finishing of the pieces that constitute the project as a whole.

Reliability and top performance



All Intermac products are designed with a CAD program for solid modelling that simulates the dynamic stress generated during the machining operations and highlights any areas that need to be stiffened in order to ensure long-lasting reliability for the machine.



Spindle absorption is constantly measured by the NC, and the pressure exerted by the tool on the piece is then proportionally adjusted to guarantee the best possible finish quality.



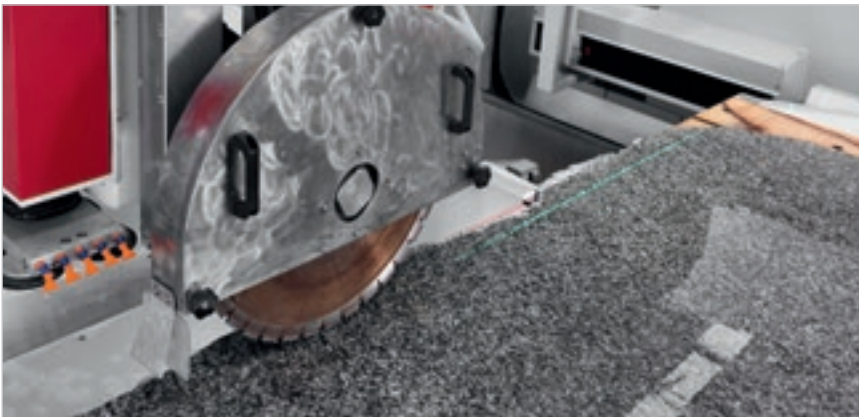
The mechanical pre-setter (optional) checks the degree of wear on the diamond tools (the frequency of these checks is set by the machine operator), and automatically updates the tool parameters in the machine control unit, thereby guaranteeing consistent machining results over time.

MasterSaw 625

DOUBLETABLE



The laser device on the head (optional) allows the panel to be positioned on the table without using mechanical stops, offering optimum precision and notable time savings. This is particularly useful when handling large sheets that are heavy and occupy the entire table.



Laser device that allows you to view the direction of the blade directly on the panel itself. Particularly useful for cutting in manual mode.



Drill dresser (optional) located near the working area, enabling immediate tool grinding.

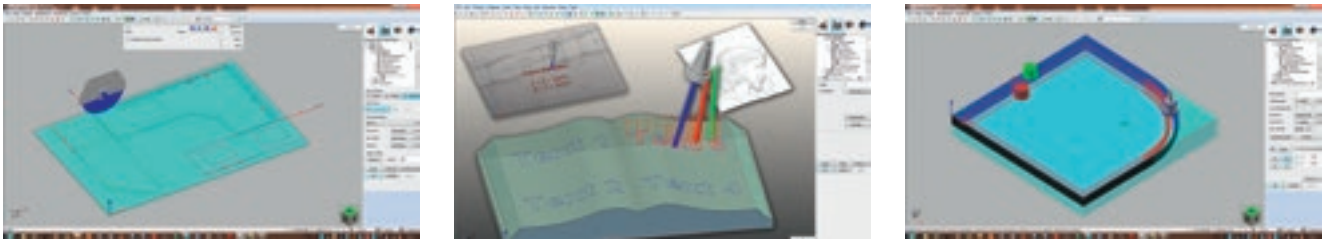
Intermac Windows Numerical Control

The new, integrated console is lightweight and easy to handle, yet extremely powerful. The use of a PC with Windows guarantees a particularly easy, user-friendly approach for the operator and full connectivity with network systems and the optic/magnetic supports available on the market.

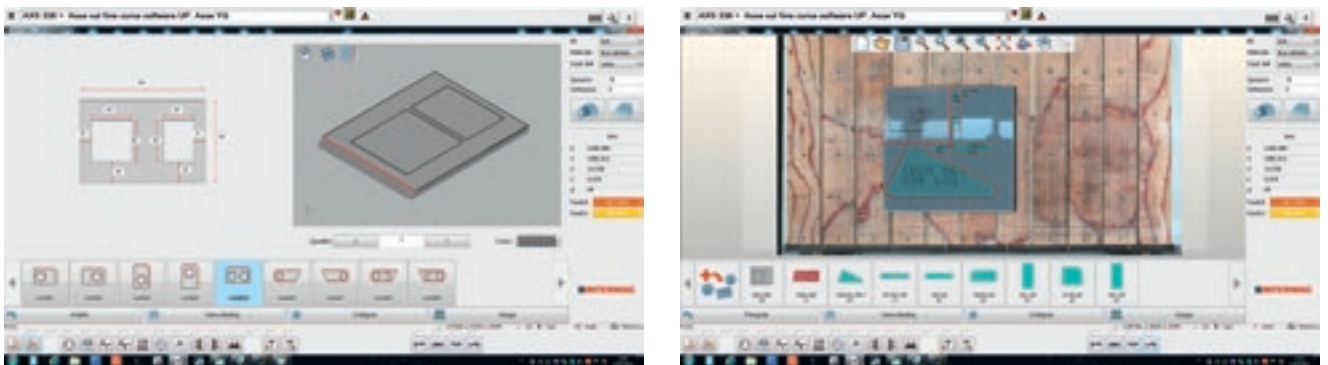


Design in just a few clicks, with endless possibilities

EasySTONE: Complete CAD/CAM software, for an extensive range of project types using all categories of tool.

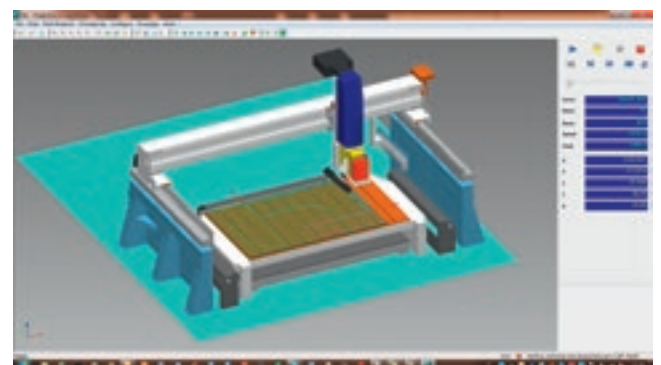
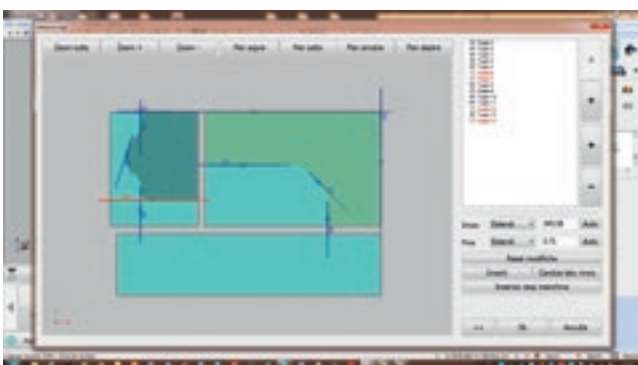


EasyCut: simplified interface for programming 3-axis disc machining operations.



Create projects from drawings, imported files and parametric 2D and 3D figures.

Take a picture of the raw sheet on which the pieces to be cut are to be drawn.



Optimise cutting operations on individual pieces within the nesting system by programming the order of cuts and the movement of pieces using the manipulator between one cut and the next.

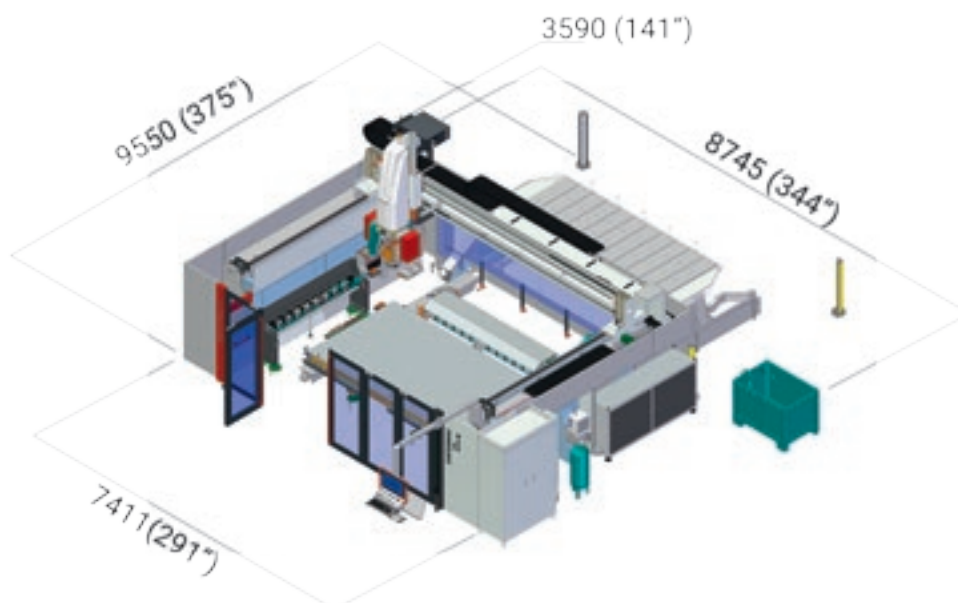
Simulation on the virtual machine: users can simulate the machine's entire working cycle, checking the movements of the head, the bench and the manipulator:

- Simulation of the machine's entire working cycle
- Removal of material and preview of the finished product
- Visualisation of any potential collisions

Technical data

Master (3 axes)

Maximum piece that can be machined on the support work table for cutting processes	3500x2000 mm
Maximum piece that can be machined on the aluminium work table for finishing processes (with 3-axis grinding wheel, 100mm diameter)	3500x2000 mm
Min - Max disc diameter on support work table	400 - 625 mm
Min - Max disc diameter on aluminium work table - * only on suction cups H = 213mm	400* - 625 mm
Z-axis stroke (aluminium work table)	650 mm
C-axis stroke	-45° - +365°
A-axis stroke	-10° - +100°
Maximum speed of X axis	m/min 60
Maximum speed of Y axis	m/min 50
Maximum speed of Z axis	m/min 15
Electrospindle power	kW 20 (S1) - 26 (S6)
Max electrospindle rotation	rpm 6000
Tool change attachment	ISO 50
Tool magazine (optional)	Max 33 positions
Power required	kW 40
Machine weight	kg 11,000
Overland shipment	2 full articulated lorries (13.60 m)
Shipment via sea	Two 40' OT containers



Biesse Group

In / 1 industrial group, 4 divisions.
and 8 manufacturing sites.

How / € 14 million p/a in R&D and 200 patents registered.

Where / 34 branches and 300 agents/certified dealers.

With / customers in 120 countries, manufacturers of furniture, design items and door/window frames, producers of elements for the building, nautical and aerospace industries.

We / 3400 employees worldwide.

Biesse Group is a global leader in the technology for processing wood, glass, stone, plastic and metal.

Founded in Pesaro in 1969, by Giancarlo Selci, the company has been listed on the Stock Exchange (STAR segment) since June 2001.

 **BIESSEGROUP**

 **BIESSE**

 **INTERMAC**

 **DIAMUT**

MECHATRONICS

